

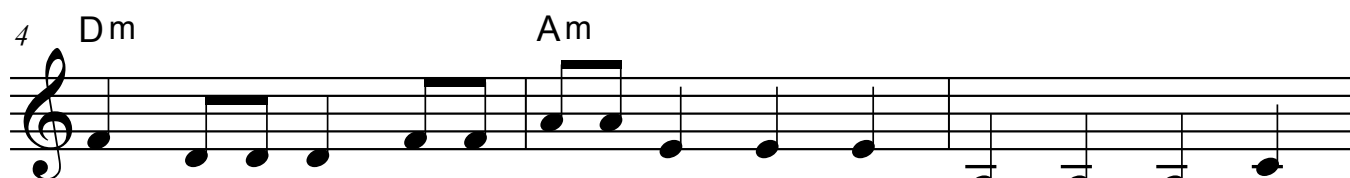
# The Wellerman

Sea Shanty



Am

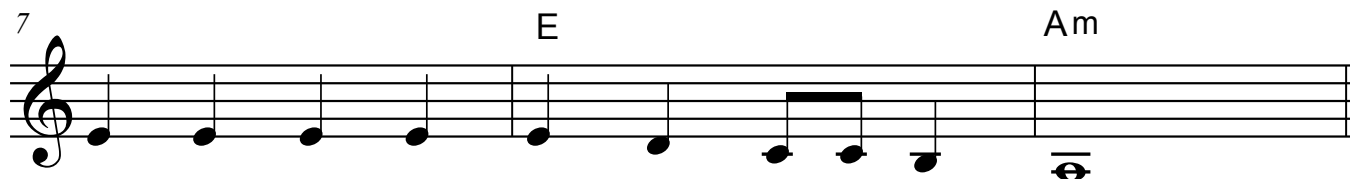
There once was a ship that put to sea, the



4 Dm

Am

name of the ship was the Billy o' Tea! The winds blew hard, her

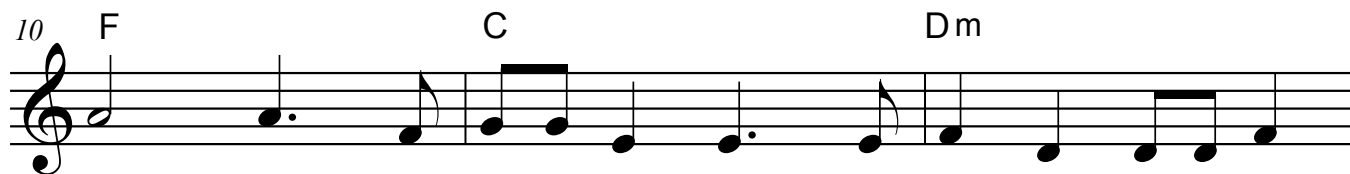


7

E

Am

bow dipped down, Oh, blow, me bully boys, blow (Huh!)



10

F

C

Dm

Soon may the Weller - man come, to bring us su-gar and

# The Wellerman

13 Am F C

tea and rum. One day, when the tonguin' is done, We'll

16 E Am

take our leave and go!

She had not been two weeks from shore, when down on her a right whale bore  
 The captain called all hands and swore, He'd take that whale in tow (Huh!)  
 Chorus

Before the boat had hit the water, The whale's tail came up and caught her  
 All hands to the side, harpooned and fought her, When she dived down below (Huh!)  
 Chorus

No line was cut, no whale was freed; The Captain's mind was not on greed  
 But he belonged to the whaleman's creed; She took that ship in tow (Huh!)  
 Chorus

For forty days, or even more, the line went slack, then tight once more  
 All boats were lost, there were only four, but still that whale did go (Huh!)  
 Chorus

As far as I've heard, the fight's still on; the line's not cut and the whale's not gone  
 The Wellerman makes his a regular call, to encourage the Captain, crew, and all.  
 Chorus